

Care Living Labs Flanders: reflections 1 year after launch of the program

iMinds-Program Office¹ and KIO²

¹ Program Office, led by iMinds, handles the umbrella coordination of the Care Living Lab Flanders program. The Program Office is the central contact point, supports the 6 living lab platforms and offers methodological guidance. The Program Office consists of Birgit Morlion, An Jacobs, Karen Willems, Katleen Boschmans, Bram Lievens, Koen De Vos.

² KIO is an interuniversity consortium studying innovations in elderly care in Flanders. The consortium consists of Mark Leys & Lien Pots (OPIH-VUB), Ellen Gorus & Charlotte Brys (GERO-VUB), Ezra Dessers, Geert Van Hootegem (CESO-KU LEUVEN), Marc Jegers & Lukas Verstele (iCher), Patricia De Vriendt (GERO-VUB & Arteveldehogeschool), Juul Lemey (Arteveldehogeschool), Bart Jansen (ETRO-VUB), Bart Mistiaen & Bart Grimonprez (HOWEST). The consortium is financed by the Flemish agency for Innovation by Science and Technology (IWT).

INTRODUCTION

In September 2013 the Care Living Lab (CLL) Flanders three year program was launched to enable innovation in elderly care. A Living Lab is seen as an infrastructure where partners can conduct cross-sectoral research in pursuit of innovative solutions, which respond to the real needs of the older persons. All activities in the CLL are carried out with the aim to adjust and/or accelerate and/or capture the future needs in the innovation process. This contribution describes the implementation experiences of the first year.

METHODS

The aim of this contribution is to sketch the situation at launch and describe the actions taken in the first year of action.

RESULTS

The program started with **4 platforms** (AZoB, AIPA, InnovAge and LiCalab) and 10 projects together with **3 supporting organs**: a *coordinating body* (PO-iMinds), an *interdisciplinary scientific consortium* (KIO) and a *sounding board committee* (Flanders' Care). See Figure 1 & 2.

In the course of the year **2 new platforms joined** (CareVille, Online Buurten), with 5 additional projects. After a second call 8 additional projects were funded. At the same time the platforms had to structure and manage their collaboration model and organise their service offering (collaboration agreements, privacy, communication approach, panel management...), coordinate the existing projects and support for new projects. In total, 112 organizations are collaborating in the CLL. See figure 3.

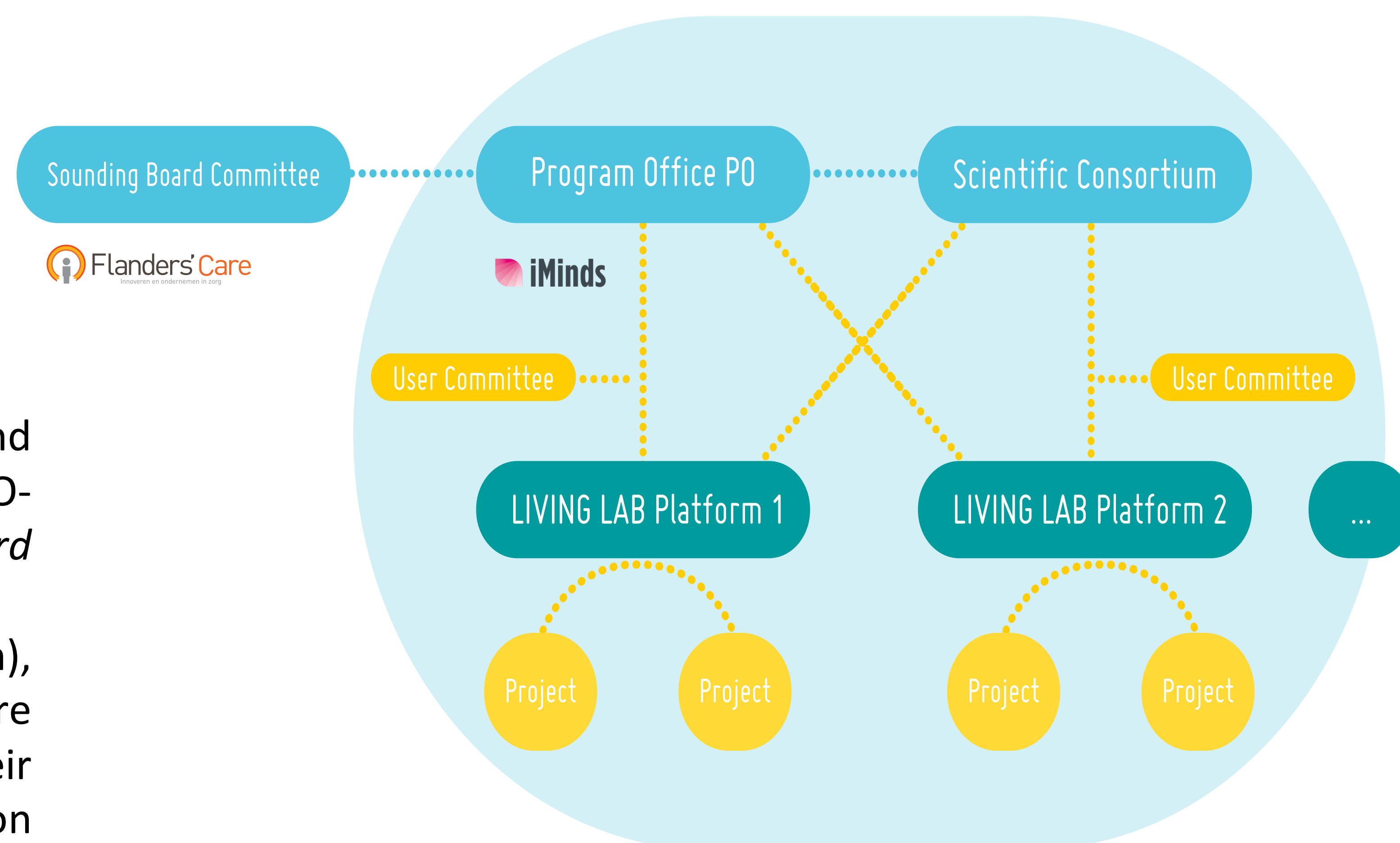


Figure 1: structure of the Care Living Labs program

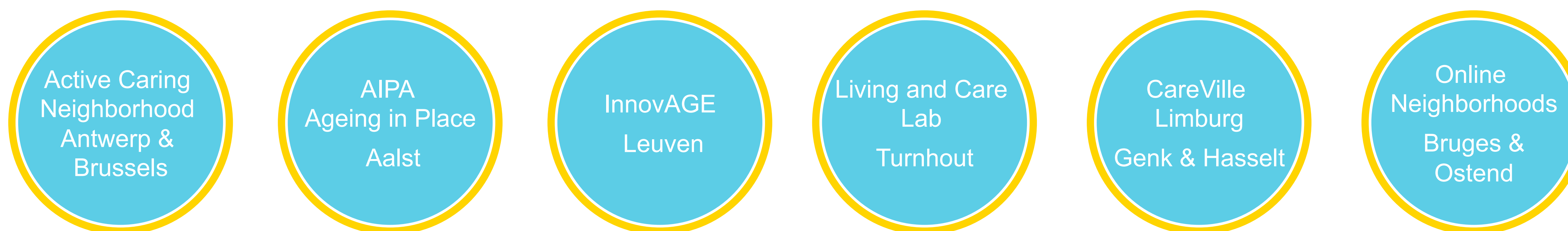
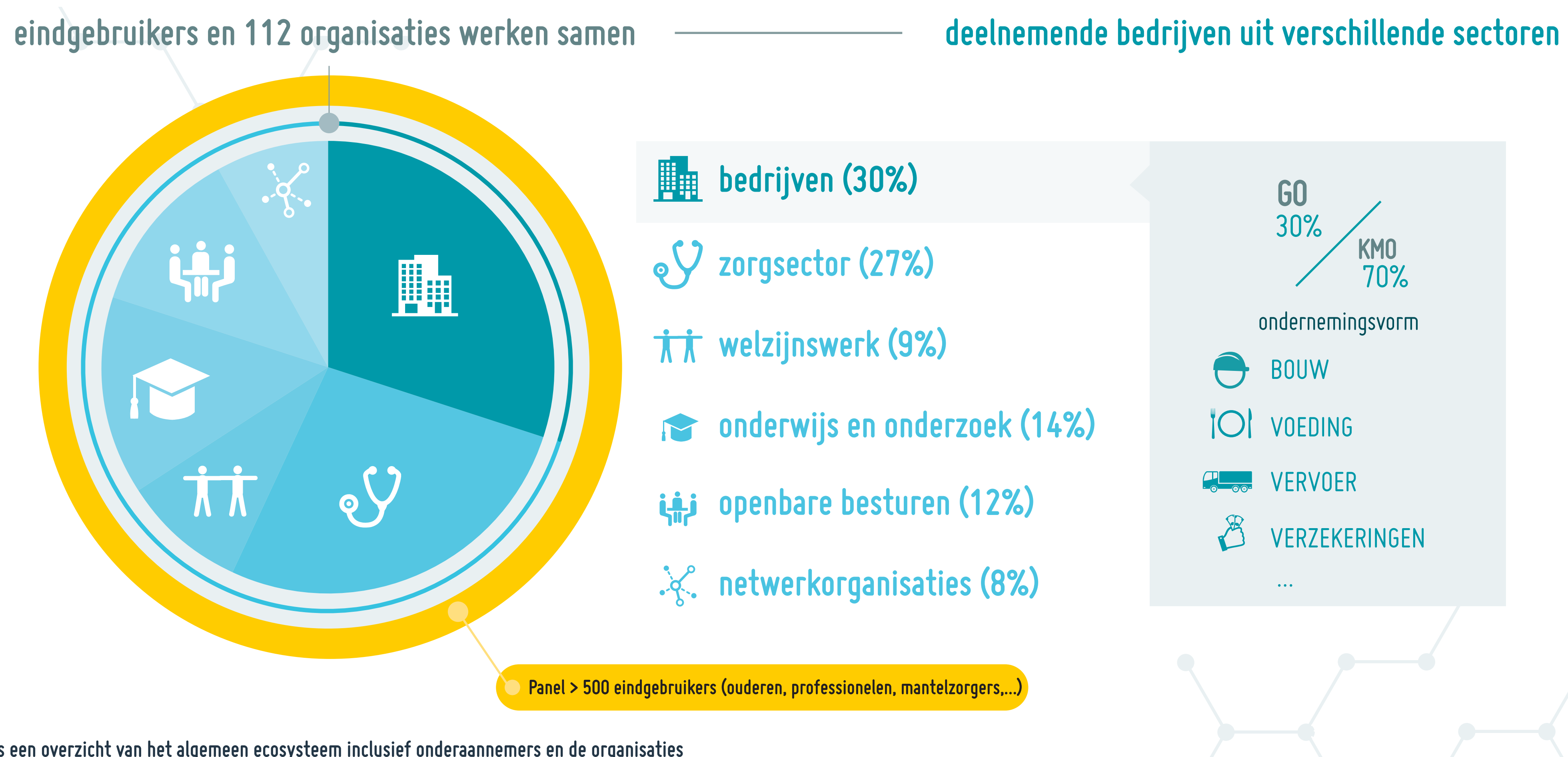


Figure 2: overview of the 6 Care Living Lab platforms

KIO made a *plan evaluation* of the submitted platform and project proposals and provides feedback and reflection based on this evaluation. In addition KIO wrote *short scientific leaflets* (WIBS), started developing a *monitoring instrument* and organized individual *coaching sessions* to the platforms.

PO organised *workshops and coaching sessions* to support the different challenges of the platforms: legal contracts, privacy and ethics, panel management, co-creation with older people, visit at foreign Living Lab, unique selling proposition of platform, care-entrepreneurship.



Dit is een overzicht van het algemeen ecosysteem inclusief onderaannemers en de organisaties

Figure 3: ecosystem of the Care Living Labs program

CONCLUSIONS

The first year of operations was mainly a learning experience with regard to a mutual understanding of expectations and activities of different players in the CLL program. Finding a balance between individual projects and the role of platforms demand reflection and effort.